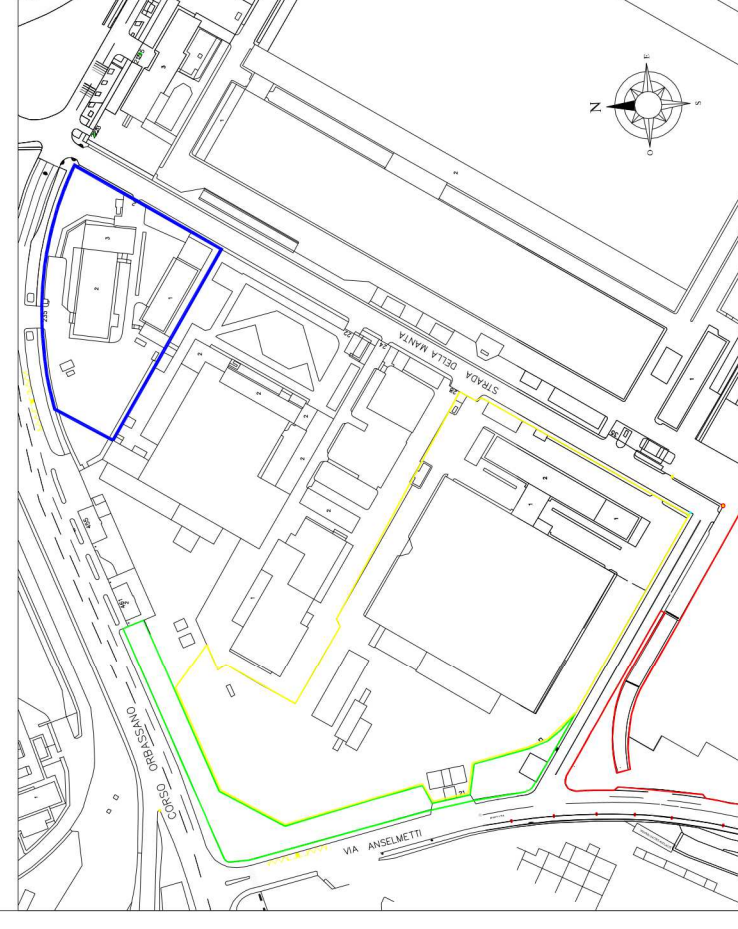


### Dati dimensionali

Immobile	Sup. fondiaria [mq]	Sup. coperta [mq]	Slp esistente [mq]
Complesso Immobiliare	circa 10.600	2.263	6.265
Palazzina Uffici (B1)		1.600	5.602
Mensa (B2)		663	663

### Dati urbanistico territoriali

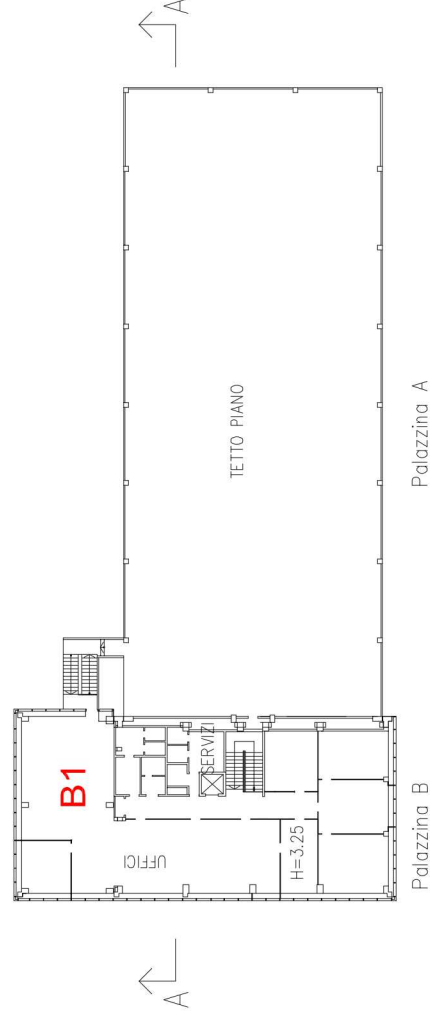
ZONA NORMATIVA	Zona Urbana Consolidata per Attività Produttive (art.14 NUEA)
AREA NORMATIVA	Area per le attività produttive IN (art. 8 NUEA)
INDICE DI EDIFICABILITA' FONDIARIO	1,35 mq SLP/mq SF



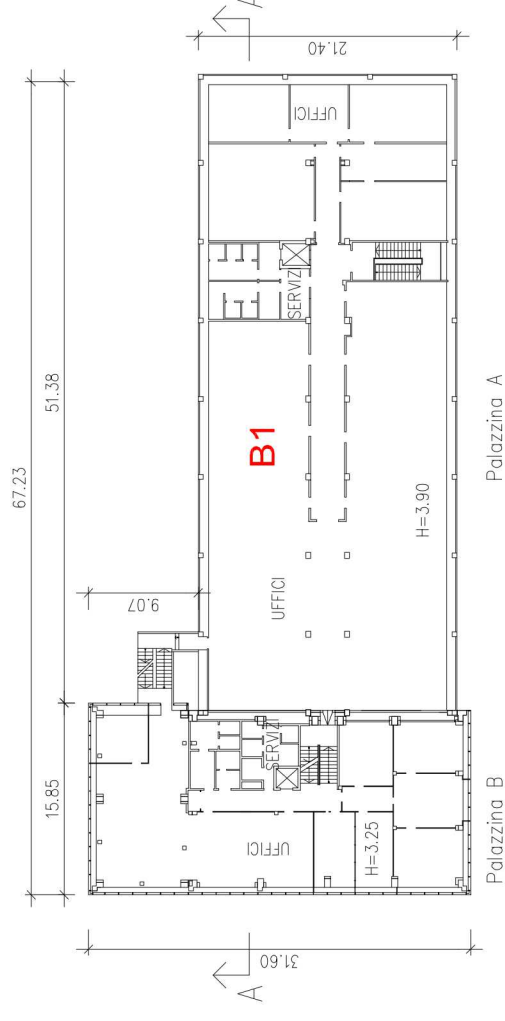
### Legenda

- █ Confine di proprietà TNE - Zona B lotto "Ex Mercato Italia"
- █ Confine di proprietà TNE - Zona B lotto "Ex Fiat Engineering"
- █ Confine di proprietà TNE - Zona C
- █ Interventi in progetto

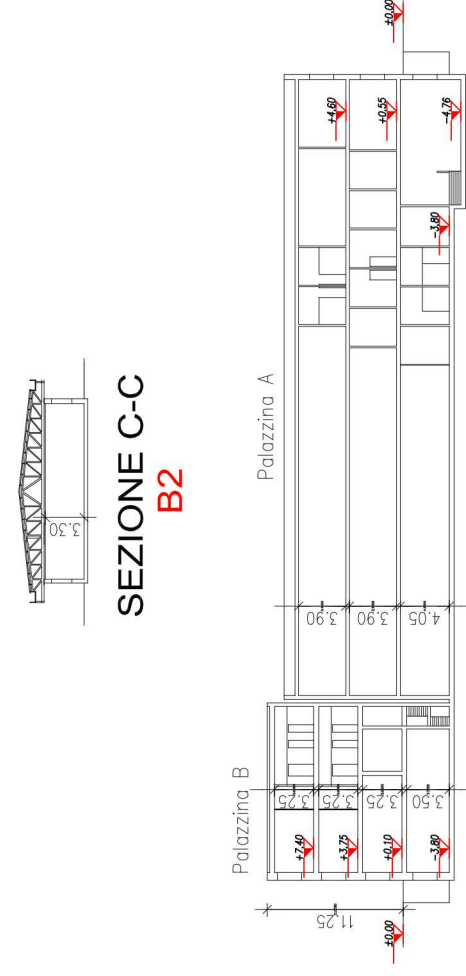
**PLANIMETRIA ZONA B**  
**Lotto "Ex Mercato Italia"**



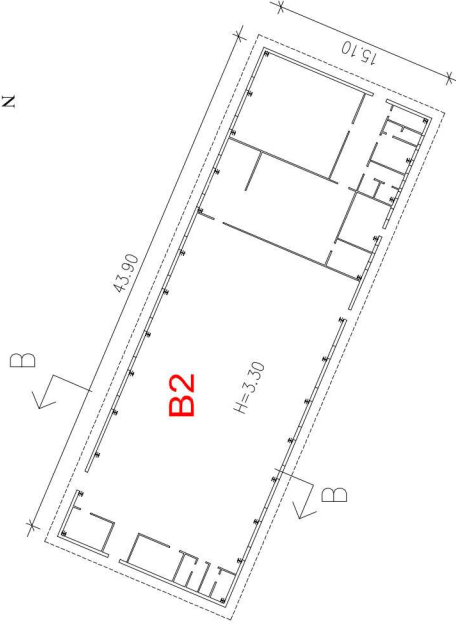
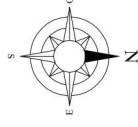
### PIANO SECONDO



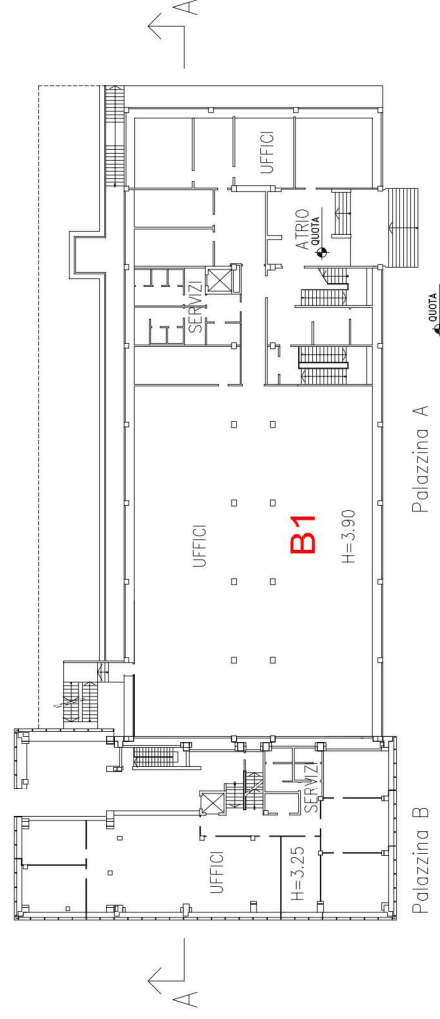
### PIANO PRIMO



### SEZIONE LONGITUDINALE A-A



### PIANO RIALZATO



### PIANO SEMINTERRATO

